



HYDEL CONSULTANTS PVT. LTD.

VPO & TEHSIL SHAHPUR, DISTRICT KANGRA, HIMACHAL PRADESH

About US

Hydel Consultants Pvt. Ltd (HCPL) is integrated organization offering engineering solutions for people with people. Company offers Engineering, Procurement and Construction services from concept to commissioning stage and for extension, renovation and modernization of existing projects including civil, electrical and mechanical works.

The company was established in 90's by first generation entrepreneur Mr. Kamal Kishore with aim of providing the complete solutions to all kind of constructions from project conception stage to commissioning stage. In year 1996, the company was shaped and registered as A Class contractor with Government of Himachal Pradesh, Irrigation & Public Health Department. Since 1996 till date the company has provided construction services in field of power sector, irrigation and public health projects, industrial projects and residential projects.

Hydropower Project- The Business Unit undertakes end to end responsibilities in design and turnkey construction of hydropower projects including all associated facilities. HCPL has provided

various range of services from concept stage to commissioning stage to about 20 Number of hydropower projects.

Solar Power Project - The Business Unit provides EPC services for installation of Solar Power Projects of 2.0 MW for M/s Lucky Brass Pvt. Ltd at Mohal Jodiyan village Pabowaal district Una H.P. HCPL is providing such services to 2 such Solar Power Projects.

The Business Unit is also providing EPC services for Roof Top Solar Photo Voltaic Project to various individuals and Institutions.

Irrigation Projects - The Business Unit provides concept to commissioning solutions for irrigation and public health projects. It also undertakes design and construction of lift irrigation scheme, hydro-mechanical work of irrigation projects. Till date the BU has provided services in total 15 Number of irrigation & public health projects.

Roads - The business unit is specialized in providing in outstanding services in construction of roads and has provided services to various government and private agencies.

Transmission Line Projects

The business units concentrate on Transmission line and switchyard development works. HCPL has experience of building switchyards on hilly terrain and route selection & construction of transmission line.

Railway Electrification – The Business Unit is providing services for Electrification of Indian railways and is currently associated with a Spanish Company named COBRA Instalaciones y Servicios for electrification of Railway line from Jabalpur to Satna.

VISION

“For People with People”, Making a sustainable development for the society for people with involvement of people

STRENGTHS

- Professional team members with proven track record of successfully completing time bound projects of high value in different environs.
- High level of expertise and with vast experience in various field of project development
- Quality and time bound approach
- Single window for cost effective solutions
- Equipped with ready to move construction machinery

- Experience in working with Government as well as Private Sector

OBJECTIVES

- Continual improvement to meet people demand with people involvement is the HCPL primary objective. ,
- Compliance with relevant Standards, best engineering practices,
- Integration of all stake holders in the improvement,
- Support of our business processes through up-to-date equipment and practices,
- Selection of competent employees and qualifying them by regular training and further education,
- Constant adaptation to the technological development in our fields of work,
- Observation of the market participants in our target markets, paying particular attention to changes in client interests and needs.

EHS Policy

Hydel Consultants believes that its employees are its most important resource and as such HSE is unequivocally our number one core value and constantly strive to achieve zero injuries and illnesses.

Health Safety and environment as amongst the highest corporate priorities, as an integrated part of its business performance and as key determinant to sustain development.



COMPANY DATA

Company	Hydel Consultants Pvt. Ltd.
Incorporation	1998
Headquarter	VPO & Tehsil Shahpur, district Kangra, Himachal Pradesh
Services	Management, Engineering and Construction
Fields of Activity	Hydropower Irrigation Industrial Residential Transmission & Distribution
Projects	In India

We cover the wide-ranging continuum of engineering and construction services for all project cycles:



PROJECT STAGE CONCEPTION

- Conceptual & Feasibility Studies
- Survey & Field Investigations
- Establishment of project levels / elevations & layouts
- Establishment of resource availability
- Determination of enabling infrastructure requirement
- Benchmarking of project cost
- Preliminary construction plan and schedule
- Establishing overall viability of the project & the conditionality



PRE-CONSTRUCTION STAGE

- Site reconnaissance
- Development of stage wise survey & investigation program
- Establishing BOQ and specification for survey, tests & investigation
- Carrying out of Survey & investigation works
- Preparation of PFR, FSR and/or DPR
- Basic / tender level engineering

- 🌍 Preparation of tender documents for EPC or Package Wise project implementation
- 🌍 Bid evaluation and other assistance during contract negotiation
- 🌍 Contract Award



CONSTRUCTION STAGE

- 🏗️ Detail Engineering
- 🏗️ Project Planning
- 🏗️ Material Procurement
- 🏗️ Modernized Construction
- 🏗️ Construction Supervision
- 🏗️ Quality Assurance and Control
- 🏗️ Contract Administration



POST CONSTRUCTION STAGE

- 🏗️ Operation & Maintenance Services
- 🏗️ Assessment of Project
- 🏗️ Site Inspection
- 🏗️ Working out of alternative renovation and modernization scenarios
- 🏗️ Technical and commercial feasibility of alternative renovation and modernization plans
- 🏗️ Preparation of technical specifications & tender documents
- 🏗️ Planning and supervision of renovation and modernization works

- 🏗️ Training of counterpart personnel
- 🏗️ Renovation and modernization of projects
- 🏗️ Project Expansion



ENVIRONMENTAL AND PLANNING SERVICES

- 🌍 Conducting all mandatory consultations with LPAs and statutory bodies
- 🌍 Commissioning specialist assessments and managing such to ensure they are EIA compliant
- 🌍 Developing mitigation, enhancement, monitoring and environmental management plans
- 🌍 Developing construction, transport and decommissioning management plans
- 🌍 Preparing and submitting Environmental Statements, Non-Technical Summaries and Consultation Reports

EXPERIENCE IN HYDROPOWER PROJECTS

In recent years Hydel Constructions has been engaged by clients on several projects for our design, consultation, resource and planning services. List of Projects in which Hydel Constructions was engaged at various stage of development are:

- UPPER JOINER (8.0MW)
- GHATUR TOP HEP (5.0MW)
- BRAHL TOP HEP
- KALOHALI MATA

- (5.0MW)
- GAJ TOP HEP (3.60MW)
- BANER SANGAM HEP(5.0 MW)
- BALIJ TOP HEP(5.0MW)
- LEOND JAMMU HEP(1.0MW)
- LEOND NOULI HEP (0.50MW)
- GAJ GAJEU HEP (2.50MW)
- SAPARI NAL HEP (3.0MW)
- GAJEU TOP HEP (1.50MW)
- LEOND KARERI HEP (1.50MW)
- MASRET HEP (3.50 MW)
- SUIL LANGERA HEP (5.0 MW)
- SIRKOT SHEP (0.5 MW)
- LOWER CHAKKI (2.0 MW)
- LOWER BHAGAIR (0.50 MW)
- UPPER BHAGAIR (1.00 MW)
- HEP(1.20MW)
- SARANG HEP (1.0 MW)
- HIMRI TOP HEP (1.0 MW)
- AWA HEP (1.0 MW)
- BHARAN MASHRAN HEP (1.0 MW)
- DEHAR TOP HEP (4.0 MW)
- NEOGAL HEP (1.0 MW)
- SHALVI HEP (2.0 MW)
- SETHU HEP (1.0 MW)
- KHERI HEP (1.9 MW)
- BANUALA SHEP (5.0 MW)
- RUPANI SHEP (4.0 MW)
- SUMERU SHEP (0.5 MW)
- LAHORI SHEP (1.0 MW)
- MACHHOI SHEP (1.20 MW)
- JUTHED SHEP (400 KW)

EXPERIENCE IN CONSTRUCTION PROJECTS

Hydel Constructions has vast experience in construction of various type of construction. Brief details of works handled are described below.

- ✦ Underground Storage Tanks for Irrigation and Public Health
- ✦ Sewerage Work for Public Work Department
- ✦ Construction of Road Works involving maximum single stretch of road as 15 km
- ✦ Underground Works - Tunnel work ranging from 0.9 km to 4.5 km of maximum dia up to 4.0 m for Hydropower Sector
- ✦ River Diversion work with river width ranging from 10 m to 50 m.
- ✦ Reinforced Concrete Structures involving water retaining structure, water conductor channels, frame structure including power house building, control block.
- ✦ Special water structures like water intake, desilting tanks, forebay, water conductor system etc. including hydro-mechanical installations.
- ✦ Surface Excavation works with stabilization of maximum height of slope as 40 m
- ✦ Procurement and Installation of E&M Machine Foundations for hydropower sector
- ✦ Procurement, Installation and testing of Hydro- mechanical works at water inlet and outlet structures including trash racks, stop logs, and vertical gates.

- ✦ Procurement, installation & testing of steel penstock of maximum length of 710 m with difference in elevation of 500m from take-off point to termination point.
- ✦ 33 kV double/single circuit transmission line of 45 km with elevation difference of 600 m between take off and termination point.
- ✦ Establishment & monitoring of multiple stage gauge discharge measurement sites.

HYDROPOWER

Hydropower Brahl Top SHEP (5.0 MW)

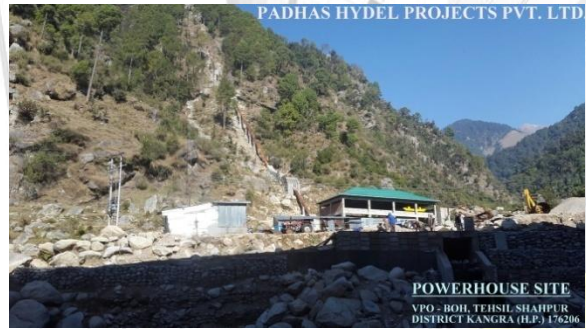
Client – M/s Padhas Hydel Projects P Ltd

Service Type – Engineering & Construction

- finalization of project layout and components
- Identification of project capacity
- Development of a bankable DPR
- Review and finalization of tender design, technical specification and bid document for construction contracts bid evaluation and assistance during tendering.

START December 2011

Completion October 2016



Technical Data

Surface Works	Weir, Intake, Desilting Tank, RCC Frame structure for Power House
Under Ground Works	Tunnel of Length 1910 m of dia 2.5m
Topographical Survey	All the components of the Project
Geotechnical Investigations	Tunnel and Power House
River Diversion Works	River Width 15 m at altitude
Volume of Surface Excavation	20000 cum
Volume of Underground Works	2.5 m dia 1910 m long water conveying tunnel
Volume of Concrete Works	10000
Length of Transmission Line	12.5 km
Hydro-mechanical	710 m long, 800 mm dia Penstock & 550 m long, 1300 mm dia MS Pipe
Switchyard	33 kV AIS
Transmission Line	33kV HT 12.5 km long
Total Value of Work Order (Rs, in Lakh)	2400.00
Value of Work Completed (Rs, in Lakh)	2550.00

Hydropower - Baner Sangam SHEP (5.0 MW)

Client -

Service Type – Engineering & Construction

- finalization of project layout and components
- Identification of project capacity
- Development of a bankable DPR
- Review and finalization of tender design, technical specification and bid document for construction contracts bid evaluation and assistance during tendering.

START	December 2009
Completion	June 2016



Technical Data

Surface Works	Weir, Intake, Desilting Tank, RCC Frame structure for Power House
Under Ground Works	Tunnel
Topographical Survey	All Components of the Project

Geotechnical Investigations Tunnel, Forebay & Power House

River Diversion Works River Width 40 m at altitude 760 m

Volume of Surface Excavation 30000 cum

Volume of 4.0 m dia 4200 m long Underground Works water conveying tunnel

Volume of 12500 cum Concrete Works

Length of 8.5 km Transmission Line

Hydro-mechanical Penstock 1400 mm dia, length 110 m

Switchyard 33 kV AIS

Transmission Line 33 kV HT Single Circuit 8.5 km long

Total Value of 1200.00 Work Order (Rs, in Lakh)

Value of Work 1350.00 Completed (Rs, in Lakh)

Hydropower Gaj Top SHEP (3.6 MW)

Client – M/s Satya Sai Hydel Projects P Ltd

Service Type – Engineering & Construction

- finalization of project layout and components
- Identification of project capacity
- Development of a bankable DPR
- Review and finalization of tender design, technical specification and bid document for construction contracts bid evaluation and assistance during tendering.

START	March 2012
Completion	Under Construction



Technical Data

Surface Works	Weir, Intake, Desilting Tank, RCC Frame structure for Power House
---------------	---

Under Ground Works	Tunnel of Length 900 m of dia 2.0 m
--------------------	-------------------------------------

Topographical Survey	All Projects Components
----------------------	-------------------------

Geotechnical Investigations	Tunnel, Penstock
-----------------------------	------------------

River Diversion Works	River Width 10 m at altitude
-----------------------	------------------------------

Volume of Surface Excavation	10000 cum
------------------------------	-----------

Volume of Underground Works	2.0 m dia 910 m long water conveying tunnel
-----------------------------	---

Volume of Concrete Works	5000 cum
--------------------------	----------

Length of Transmission Line	2.65 km
-----------------------------	---------

Hydro-mechanical Penstock	450 m long, 800 mm dia
---------------------------	------------------------

Switchyard	33 kV AIS
------------	-----------

Transmission Line	33kV HT 2.5 km long
-------------------	---------------------

Total Value of Work Order	900.00
---------------------------	--------

(Rs, in Lakh)

Value of Work Completed

(Rs, in Lakh)

Hydropower Gaj Top SHEP (3.6 MW)

Client – M/s Satya Sai Hydel Projects P Ltd

Service Type – Engineering & Construction

- finalization of project layout and components
- Identification of project capacity
- Development of a bankable DPR
- Review and finalization of tender design, technical specification and bid document for construction contracts bid evaluation and assistance during tendering.

START	March 2012
Completion	Under Construction



Technical Data

Surface Works	Weir, Intake, Desilting Tank, RCC Frame structure for Power House
---------------	---

Under Ground Works	Tunnel of Length 900 m of dia 2.0 m
--------------------	-------------------------------------

Topographical Survey All Projects Components

Geotechnical Investigations Tunnel, Penstock

River Diversion Works River Width 10 m at altitude

Volume of Surface Excavation 10000 cum

Volume of Underground Works of 2.0 m dia 910 m long water conveying tunnel

Volume of Concrete Works of 5000 cum

Length of Transmission Line of 2.65 km

Hydro-mechanical Penstock 450 m long, 800 mm dia

Switchyard 33 kV AIS

Transmission Line 33kV HT 2.5 km long

Total Value of Work Order (Rs, in Lakh) of 900.00

Value of Work Completed (Rs, in Lakh) 960.00

Hydropower Budhil HEP (72.0 MW)

Client – M/s Lanco Hydel Projects P Ltd

Service Type – Construction

- Construction of Civil Components of Power House, Tail race

START March 2012

Completion Under Construction



Technical Data

Surface Works RCC Frame structure for Power House, Tail Race

Volume of Surface Excavation 4000 cum

Volume of Concrete Works of 2500 cum

Total Value of Work Order (Rs, in Lakh) of 250.00

Value of Work Completed (Rs, in Lakh) 320.00

Hydropower Brahl SHEP (4.0 MW)

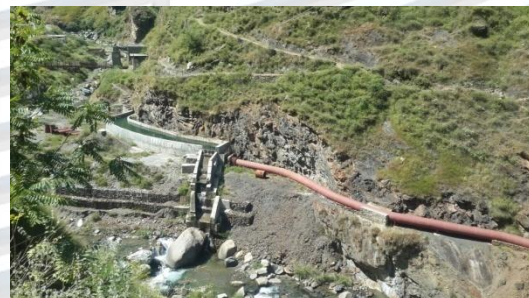
Client – M/s Sodhi Brothers Hydel Projects P Ltd

Service Type – Construction

- Construction of water Conductor System, Penstock, Anchor Blocks and saddle supports. Erection of Transmission Line.

START March 2006

Completion July 2009



Technical Data

Surface Works Water Conductor System, Penstock, Anchor Block, Saddle Supports.

Topographical Survey All Projects Components

Geotechnical Investigations Water Conductor System, Penstock

Volume of Surface Excavation 2000 cum

Volume of Concrete Works 5000 cum

Length of Transmission Line 10.5 km

Hydro-mechanical Penstock 600 m long, 900 mm dia

Switchyard 33 kV AIS

Transmission Line 33kV HT 10.5 km long

Total Value of Work Order (Rs, in Lakh) 350.00

Value of Work Completed (Rs, in Lakh) 380.00

Value of Work Completed (Rs, in Lakh) 380.00

Hydropower Khauli HEP (12.0 MW)

Client – M/s P & R Construction Company

Service Type – Construction

- Construction of Civil Components of Penstock and Switchyard

START January 2005

Completion August 2008



Technical Data

Surface Works Construction of Anchor Blocks and Saddle supports of Penstock

Volume of Surface Excavation 7500 cum

Volume of Concrete Works 1250 cum

Total Value of Work Order (Rs, in Lakh) 150.00

Value of Work Completed (Rs, in Lakh) 170.00

Construction of IPH Colony at Shahpur

Client – HPIPH, Shahpur

Service Type – Construction of building works

- finalization of project layout
- detail drawings of building

START April 1992

Completion March 1994



Technical Data

Surface Works	Construction of building works
Topographical Survey	Layout of building & colony
Volume of Surface Excavation	1300 cum
Volume of Concrete Works	2200 cum
Type of Construction	Type II, Type III, Type IV, Type V quarters & Office building
Total Value of Work Order (Rs, in Lakh)	55.00
Value of Work Completed (Rs, in Lakh)	58.00

Construction of Overhead & Underground Water Tank

Client – HPIPH, Dharamshala

Service Type – Construction of Overhead & Underground Tanks

- construction of RCC tank overhead & underground at various places

START	January 1994
Completion	March 1995



Technical Data

Surface Works	Construction of water supply tanks
Underground Works	Construction of underground water storage tanks
Volume of Surface Excavation	50000 cum
Volume of Concrete Works	1500 cum
Total Value of Work Order (Rs, in Lakh)	60.00
Value of Work Completed (Rs, in Lakh)	65.00

Road Works

Client – HPPWD, Dalhousie

Service Type – Construction of 3/5 m wide Road from Panjla to Keod

- finalization of project layout
- survey of road works
- formation cutting of road
- RCC works for protection and retaining walls

START January 2005
Completion November 2009



Technical Data

Surface Works	Construction of Road
Topographical Survey	L-sections and cross sections of Road
Volume of Surface Excavation	18000 cum
Volume of Concrete Works	2200 cum
Length of Road	6.5 km
Total Value of Work Order (Rs, in Lakh)	195.00
Value of Work Completed (Rs, in Lakh)	205.00

Road Works

Client – HPPWD, Bharmour

Service Type – Construction of 3/5 m wide Road from Kandi to Kuthed

- finalization of project layout
- survey of road works
- formation cutting of road
- RCC works for protection and retaining walls

START December 2009
Completion November 2012



Technical Data

Surface Works	Construction of Road
Topographical Survey	L-sections and cross sections of Road
Volume of Surface Excavation	27000 cum
Volume of Concrete Works	2200 cum
Length of Road	9.0 km
Total Value of Work Order (Rs, in Lakh)	320.00
Value of Work Completed (Rs, in Lakh)	355.00

EXPERIENCE IN IRRIGATION PROJECTS

At Hydel Construction we have provided landmark services to our client for engineering, extension, renovation and modernization of existing and new irrigation scheme. Details of services provided are as follows:

- Topographical survey of command area capturing details of cultural command area

- 📊 Cross sectional survey along the preferred canal alignment including selection of canal route.
- 📊 Longitudinal survey of canal alignment
- 📊 Condition assessment survey of existing structures including dam, weir, canal inlet & outlet, cross drainage structures, bridges, culverts, aqueducts, syphon structures etc.

Irrigation Project

Lift Irrigation Project Daak Palera
Client – HPIPH, Kangra

Service Type – Erection & Laying of AC Pressure Pipe

START January 1996
Completion November 1997



Technical Data

Surface Works Erection of AC pressure Pipe
Topographical Survey Line Survey of Pressure Pipe
Volume of Surface Excavation 2500 cum
Volume of Concrete Works 3000 cum
Length of Irrigation Pipe 5.0 km

Total Value of Work Order (Rs, in Lakh) 29.00

Value of Work Completed (Rs, in Lakh) 32.00

Lift Irrigation Project Kuthed
Client – HPIPH, Nagrota Bagwan

Service Type – Erection & Laying of AC Pressure Pipe

START September 1996
Completion December 1997



Technical Data

Surface Works Diversion Weir, Pump House Erection of AC pressure Pipe
Topographical Survey Line Survey of Pressure Pipe
Volume of Surface Excavation 2000 cum
Volume of Concrete Works 2250 cum
Length of Irrigation Pipe 3.5 km
Total Value of Work Order (Rs, in Lakh) 22.00
Value of Work Completed 26.50

(Rs, in Lakh)

Sewerage System Line in Dharamshala

Client – HPIPH, Dharamshala

Service Type – Erection & Lying of Sewerage Pipe

START January 1998

Completion November 2002



Technical Data

Surface Works Construction of Sewerage Treatment Plant

Topographical Survey Line Survey of Sewerage Pipe

Underground Works Construction of Sewerage Pipe

Volume of Surface Excavation 500 cum

Volume of Concrete Works 5000 cum

Length of Sewerage Pipe 28.0 km

Total Value of Work Order (Rs, in Lakh) 220.00

Value of Work Completed (Rs, in Lakh) 235.00

Value of Work Completed (Rs, in Lakh) 235.00

Value of Work Completed (Rs, in Lakh) 235.00

Value of Work Completed (Rs, in Lakh) 235.00

Value of Work Completed (Rs, in Lakh) 235.00

Value of Work Completed (Rs, in Lakh) 235.00

Sewerage System Line in Nagrota Bagwan

Client – HPIPH, Nagrota Bagwan

Service Type – Erection & Lying of Sewerage Pipe

START

March 1999

Completion

October 2002



Technical Data

Surface Works Construction of Sewerage Treatment Plant

Topographical Survey Line Survey of Sewerage Pipe

Underground Works Construction of Sewerage Pipe

Volume of Surface Excavation 850 cum

Volume of Concrete Works 3500 cum

Length of Sewerage Pipe 15.0 km

Total Value of Work Order (Rs, in Lakh) 190.00

Value of Work Completed (Rs, in Lakh) 205.00

Value of Work Completed (Rs, in Lakh) 205.00

Value of Work Completed (Rs, in Lakh) 205.00

Transmission Line Projects

Client – HPSEBL Khauli Powerhouse Division

Service Type – Construction & Erection of 33 kV Switchyard AIS Type at Khauli Power house

START	December 2015
Completion	October 2016



Technical Data

Surface Works	Construction & Erection of 33 kV Switchyard
Topographical Survey	Line Survey of 33 kV HT Line from Power house at Boh to Khauli
Volume of Surface Excavation	525 cum
Volume of Concrete Works	560 cum
Length of Transmission Line	12.5 km
Total Value of Work Order (Rs, in Lakh)	240.00
Value of Work Completed (Rs, in Lakh)	245.00

Client – HPPTCL 66 kV DC Transmission Line from 22/66 kV Bagipul to 66/220 Kotla in H.P

START	April 2016
Completion	Under Construction



Technical Data

Surface Works	66 kV DC Transmission Line
Topographical Survey	Line Survey of 66 kV EHV Line from Bagipul to Kotla.
Length of Transmission Line	25.5 km
No. Of Towers	91
Total Value of Work Order (Rs, in Lakh)	125.00
Value of Work Completed (Rs, in Lakh)	130.00

Transmission Line Projects

Transmission Line Projects

Client – Tissa Power Transmission Corporation
 Service Type – Construction & Erection of 132 kV Transmission Line from Tissa to Bathri Sub Station.

START	December 2004
Completion	October 2006



Technical Data

Surface Works	Construction & Erection of 132 kV EHV TL
Topographical Survey	Line Survey of 132 kV EHV Line from Tissa to Bathri Sub Station.

Volume of Surface Excavation	1515 cum
------------------------------	----------

Volume of Concrete Works	1800 cum
--------------------------	----------

Length of Transmission Line	45.50 km
-----------------------------	----------

No. Of Towers	152
---------------	-----

Total Value of Work Order (Rs, in Lakh)	161
---	-----

Value of Work Completed (Rs, in Lakh)	169
---------------------------------------	-----

Excavation work Project

Client – Govt. Collage Khundian Jwalaji (H.P)

START	August 2016
Completion	Under Construction



Technical Data

Surface Works	Excavation work
Topographical Survey	L-section and X-section, Building Foundation

Volume of Surface Excavation	6899.10 cum
------------------------------	-------------

Total Value of Work Order (Rs, in Lakh)	25.00
---	-------

Railway Electrification Projects

Client – M/s CIPL-COBRA JV/ Indian Railways

START	September 2016
Completion	Under Construction



Technical Data

Surface Works Erection & Foundation Work at OHE Rail line in section Jabalpur to Katni

Topographical Survey Rail Line Survey

Volume of Surface Foundation 1500 cum

Erection of Switching Stations 6 Nos.

Construction and Erection of Traction Sub Station 132/25 kV 1 Nos.

Erection of Over Head Electrification 100 kms.
Total value of Work Order (In Lacs) 425.00

SOLAR PROJECT

CLIENT- M/s Lucky Brass Pvt. Ltd

START JANUARY 2018
COMPLETION JULY 2018



Technical Data

Capacity 2000 kW
Total value of Work Order (INR) 3.0 Cr

CLIENT- Dalhousie Public School

START AUG 2018
COMPLETION DEC 2018



Technical Data

Capacity 265 kW
Total value of Work Order (INR) 2.02 Cr

CLIENT- Thakur Pre Siksha Traning & Coaching Centre (Dehra)

START OCT 2019

COMPLETION DEC 2019



Technical Data

Capacity 98 kW

Total value of Work Order (INR) 0.76 Cr

CLIENT- Govt Degree Collage Chamba

START SEPT 2019

COMPLETION OCT 2019



Technical Data

Capacity 25 kW

Total value of Work Order (INR) 0.13 Cr

CLIENT- Govt. Degree Collage Dhaliara

START OCT 2019

COMPLETION NOV 2019



Technical Data

Capacity 33 kW

Total value of Work Order (INR) 0.17 Cr

CLIENT- VVM Nursing College Nurpur

START NOV 2019

COMPLETION DEC 2019



Technical Data

Capacity 50 kW

Total value of Work Order (INR) 0.25 Cr

CLIENT- Industrial Training Institute, Nehran Pukhar
START NOV 2019
COMPLETION DEC 2019



Technical Data
Capacity 35 kW
Total value of Work Order (INR) 0.18 Cr

CLIENT- Lawrence Public School Shahpur
START DEC 2019
COMPLETION DEC 2019



Technical Data
Capacity 10 kW
Total value of Work Order (INR) 0.06 Cr

CLIENT- HIPER , Nadaun (Hamirpur)
START NOV 2019
COMPLETION DEC 2019



Technical Data
Capacity 10 kW
Total value of Work Order (INR) 0.06 Cr

CLIENT- Yog Manav Trust, Banikhet, Chamba
START DEC 2019
COMPLETION DEC 2019



Technical Data
Capacity 17 kW
Total value of Work Order (INR) 0.09 Cr

CLIENT- APMC BUILDINGS, Ponta Sahib

START May 2022
COMPLETION June 2022



Technical Data

Capacity 150 kW
Total value of Work Order (INR) 0.63Cr

CLIENT- Govt. ITI Bangana Distt. Una

START July 2022
COMPLETION July 2022



Technical Data

Capacity 41 kW
Total value of Work Order (INR) 0.19 Cr

CLIENT- Govt. Degree Collage Nagrota Bagwan

START July 2022
COMPLETION July 2022



Technical Data

Capacity 25 kW
Total value of Work Order (INR) 0.12 Cr

CLIENT- Govt. ITI Banni Distt. Hamirpur

START July 2022
COMPLETION July 2022



Technical Data

Capacity 24 kW
Total value of Work Order (INR) 0.11 Cr

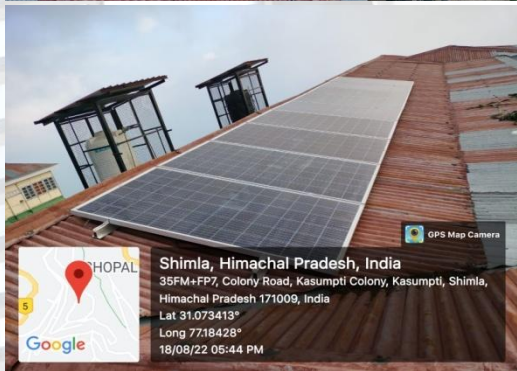
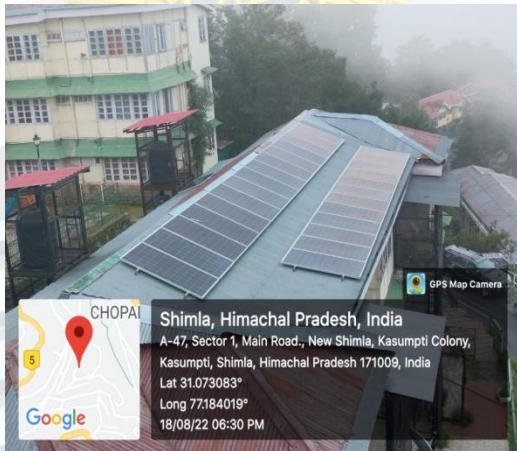
CLIENT- Different Govt. Residence & Ministers Residence at District Shimla

START

March 2022

COMPLETION

Work in Progress



Technical Data

Capacity 552 kW

Total value of Work Order 2.76 Cr

(INR)

**CLIENT- K-Solr Power Project, Fatehpur Kangra
Ground Mounted Solar Project**

START

March 2022

COMPLETION

July 2022



Technical Data

Capacity	500 kW
Total value of Work Order (INR)	2.33 Cr

**CLIENT- Govt. Sen. Sec. School Bagshid Khania
Khas District Chamba**
START May 2022
COMPLETION May 2022



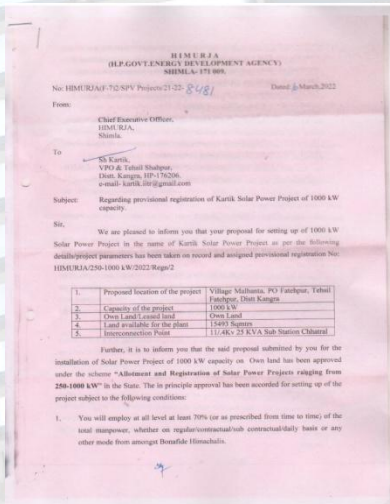
Technical Data
Capacity 24 kW
Total value of Work Order (INR) 0.12 Cr

CLIENT- Govt. Boys Sen. Sec School Bharmour
START May 2022
COMPLETION July 2022



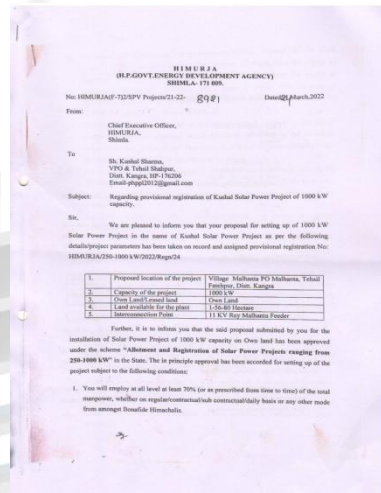
Technical Data
Capacity 23 kW
Total value of Work Order (INR) 0.11 Cr

CLIENT- Kartik Solar Power Project
START MARCH 2022
COMPLETION Work in Progress



Technical Data
Capacity 1000 kW
Total value of Work Order (INR) 4.55 Cr

CLIENT- Kushal Solar Power Project
START MARCH 2022
COMPLETION Work in Progress



Technical Data
Capacity 1000 kW
Total value of Work Order (INR) 4.55 Cr

Work / Supply Orders:

Name : Different Govt. Buildings & Ministers Residences at district Shimla.

Order No. HIMURJA(F-7)/GCRTS Plants/2022-24-9254

Date of Order: 30 March 2022

Capacity: 552 kW

Cost : 2.76 Cr.

Name : Govt. Degree Collage (Arya Collage Nurpur, Nagrota Bagwan) at district Kangra.

Order No. HIMURJA(F-7)/GCRTS Plants/2022-24-4139

Date of Order: 02 July 2022

Capacity: 35 kW

Cost : 0.16 Cr.

Regd.

HIMURJA
(H.P Govt Energy Development Agency)
Block 8-A SDA Complex Kasumpti Shimla-171009

No: HIMURJA (F-7) / GCRTS Plant / 2022-24- 9254 dated 30 March,2022

To
M/s Hydel Consultants Pvt. Ltd.,
VPO & Tehsil Shahpur,
Distt. Kangra, HP-176206.

Subject: Supply, Installation and Commissioning of Grid Connected Rooftop Solar Power Plants of 552 kW aggregate capacity at different Govt. Residences and Ministers Residences at Shimla.

Reference: Tender Document No. HIMURJA (F-7) / GCRTS Plant / 2022-24 opened on dated 25.03.2022.

Sir,
With reference to above, you are hereby requested to execute the work of Supply, Installation and Commissioning of Grid Connected Rooftop Solar Power Plants of 552 kW aggregate capacity at different Govt. Residences and Ministers Residences at Shimla conforming to latest MNRE/ BIS specifications on lowest accepted rates. The other terms and conditions of the contract shall be as under:-

S.No	Description	Quantity	Rate per kW	Amount
1	FOR cost of Grid Connected Rooftop Solar Power Plants of 552 kW aggregate capacity at different Govt. Residences and Ministers Residences at Shimla for design, manufacturing, shop testing, inspection, Installation, commissioning & handing over to the HIMURJA complete in all respects as per clause No. -1 of G.C.C. and as defined in scope of technical specifications of Tender document including warranty period of five years after successful commissioning.	552 kW	50,000.00	2,76,00,000.00
	Total			2,76,00,000.00

(Rupees Two Crore, Seventy six Lacs only)

Terms and Conditions

SCOPE OF WORK

- The firm shall be obliged to complete the Work as per the articulated detailed Scope of work under Clause No. 1of tender document and in accordance with the package of Grid Connected Rooftop Solar PV project defined above.

Regd.

HIMURJA
(H.P Govt Energy Development Agency)
Block 8-A SDA Complex Kasumpti Shimla-171009

No: HIMURJA (F-7) / GCRTS Plant / 2022-24- 4139 dated 02 July,2022

To
M/s Hydel Consultants Pvt. Ltd.,
VPO & Tehsil Shahpur,
Distt. Kangra, HP-176206.

Subject: Supply, Installation and Commissioning of Grid Connected Rooftop Solar Power Plants of 35 kW aggregate capacity at different Govt. Degree Colleges in H.P.

Reference: Tender Document No. HIMURJA (F-7) / GCRTS Plant / 2022-24 opened on dated 25.03.2022.

Sir,
With reference to above, you are hereby requested to execute the work of Supply, Installation & Commissioning of 35 kW aggregate capacity at different Govt. Degree Colleges in H.P. adhering to National/ International Standards specified by MNRE, GoI within 120 days from date of award. Beneficiary / Grid Connected Roof Top Solar Power Plant details is as under:-

S No.	Description	Qty (KW)	Rates per KW	Amount
1	FOR cost of Grid Connected Rooftop Solar Power Plants of 10 kW capacity at Govt. Arya Degree College, Nurpur, Distt. Kangra, HP for design, manufacturing, shop testing, inspection, Installation, commissioning & handing over to the HIMURJA complete in all respects as per clause No. -1 of G.C.C. and as defined in scope of technical specifications of Tender document including warranty period of five years after successful commissioning.	10	48600.00	4,86,000.00
2	FOR cost of Grid Connected Rooftop Solar Power Plants of 25 kW capacity at Govt. Degree College Nagrota Bagwan, Distt. Kangra, HP for design, manufacturing, shop testing, inspection, Installation, commissioning & handing over to the	25	45000.00	11,25,000.00

Name : APMC Buildings at Parwanoo, District Solan & Ponta Sahib, Sirmour & Different APMC Buildings in Himachal Pradesh.

Order No. HIMURJA(F-7)/GCRTS Plants/2022-24-592

Date of Order: 04 May 2022

Capacity: 311 kW

Cost : 1.36 Cr.

Regd.

HIMURJA
(H.P. Govt Energy Development Agency)
Block 8-A SDA Complex Kasumpti Shimla-171009

No: HIMURJA (F-7) / GCRTS Plant / 2022-24-592 dated 04-05 April 2022

To
M/s Hydel Consultants Pvt. Ltd.,
VPO & Tehsil Shahpur,
Distt. Kangra, HP-176206.

Subject: Supply, Installation and Commissioning of Grid Connected Rooftop Solar Power Plants of 311 kW aggregate capacity at different APMC Buildings in H.P.

Reference: Tender Document No. HIMURJA (F-7) / GCRTS Plant / 2022-24 opened on dated 25.03.2022.

Sir,
With reference to above, you are hereby requested to execute the work of Supply, Installation and Commissioning of Grid Connected Rooftop Solar Power Plants of 311 kW aggregate capacity at different APMC Buildings in H.P. conforming to latest MNRE/ BIS specifications on lowest accepted rates. The other terms and conditions of the contract shall be as under-

S.No	Description	Quantity KW	Rate per kW	Amount
1	FOR cost of Grid Connected Rooftop Solar Power Plants of 7 kW capacity at APMC Building Loading and Unloading Shed, Parwanoo, Distt. Solan, HP for design, manufacturing, shop testing, inspection, Installation, commissioning & handing over to the HIMURJA complete in all respects as per clause No. -1 of G.C.C. and as defined in scope of technical specifications of Tender document including warranty period of five years after successful commissioning	7	48,600.00	3,40,200.00

2	FOR cost of Grid Connected Rooftop Solar Power Plants of 154 kW aggregate capacity at different APMC Buildings in H.P. for design, manufacturing, shop testing, inspection, Installation, commissioning & handing over to the HIMURJA complete in all respects as per clause No. -1 of G.C.C. and as defined in scope of technical specifications of Tender document including warranty period of five years after successful commissioning	154	45,000.00	69,30,000.00
3	FOR cost of Grid Connected Rooftop Solar Power Plants of 150 kW capacity at APMC Building Paonta Sahib, Distt. Sirmour H.P. for design, manufacturing, shop testing, inspection, Installation, commissioning & handing over to the HIMURJA complete in all respects as per clause No. -1 of G.C.C. and as defined in scope of technical specifications of Tender document including warranty period of five years after successful commissioning	150	42,000.00	63,00,000.00
Total				1,35,70,200.00

(Rupees One Crore, Thirty Five Lacs, Seventy Thousand and Two Hundred only)

Terms and Conditions

SCOPE OF WORK

- The firm shall be obliged to complete the Work as per the articulated detailed Scope of work under Clause No. 1of tender document and in accordance with the package of Grid Connected Rooftop Solar PV project defined above.
- PROJECT COST
 - The Project cost shall include all the costs related to above Scope of Work. The cost includes Design, Supply, Erection, Testing and Commissioning including Warranty, Operation & Maintenance (for a period of 5 years), goods and services including spares required if any during O&M period. The firm has to take all permits, approvals and licenses, insurance etc., provide training and such other items and services required to complete the scope of work as mentioned above.
 - The Project cost will remain firm and fixed and shall be binding on the firm till

Name : Govt. Sen Sec School (Recong peo, Bagsaid Baat Khania Khas, Boy School Bharmour)

Order No. HIMURJA(F-7)/GCRTS Plants/2022-24-571

Date of Order: 04 May 2022

Capacity: 50 kW

Cost : 0.24 Cr.

Regd.

HIMURJA
(H.P Govt Energy Development Agency)
Block 8-A SDA Complex Kasumpti Shimla-171009

No: HIMURJA (F-7) / GCRTS Plant / 2022-24- 571 dated 04-05-2022 April 2022

To: M/s Hydel Consultants Pvt. Ltd.,
VPO & Tehsil Shahpur,
Distt. Kangra, HP-176206.

Subject: Supply, Installation and Commissioning of Grid Connected Rooftop Solar Power Plants of 50 kW aggregate capacity at different Govt. Sen. Sec. Schools in H.P.

Reference: Tender Document No. HIMURJA (F-7) / GCRTS Plant / 2022-24 opened on dated 25.03.2022.

Sir,

With reference to above, you are hereby requested to execute the work of Supply, Installation and Commissioning of Grid Connected Rooftop Solar Power Plants of 50 kW aggregate capacity at different Govt. Sen. Sec. Schools in H.P. confirming to latest MNRE/ BIS specifications on lowest accepted rates. The other terms and conditions of the contract shall be as under-

S.No	Description	Quantity KW	Rate per kW	Amount
1	FOR cost of Grid Connected Rooftop Solar Power Plants of 3 kW aggregate capacity at Govt. Sen. Sec. School, Reckong Peo in H.P. for design, manufacturing, shop testing, inspection, Installation, commissioning & handing over to the HIMURJA complete in all respects as per clause No. -1 of G.C.C. and as defined in scope of technical specifications of Tender document including warranty period of five years after successful commissioning.	3	50,000.00	1,50,000.00

N2

2	FOR cost of Grid Connected Rooftop Solar Power Plants of 24 kW aggregate capacity at Govt. Sen. Sec. School Bagsaid, Baat, Khania Khas in H.P. for design, manufacturing, shop testing, inspection, Installation, commissioning & handing over to the HIMURJA complete in all respects as per clause No. -1 of G.C.C. and as defined in scope of technical specifications of Tender document including warranty period of five years after successful commissioning	24	48,600.00	11,66,400.00
3	FOR cost of Grid Connected Rooftop Solar Power Plants of 23 kW aggregate capacity at Govt. Boys Sen. Sec. School, Bharmour in H.P. for design, manufacturing, shop testing, inspection, Installation, commissioning & handing over to the HIMURJA complete in all respects as per clause No. -1 of G.C.C. and as defined in scope of technical specifications of Tender document including warranty period of five years after successful commissioning	23	45,000.00	10,35,000.00
Total				23,51,400.00

(Rupees Twenty Three Lacs, Fifty One Thousand and Four Hundred only)

Terms and Conditions

SCOPE OF WORK

- The firm shall be obliged to complete the Work as per the articulated detailed Scope of work under Clause No. 1 of tender document and in accordance with the package of Grid Connected Rooftop Solar PV project defined above.
- PROJECT COST
 - The Project cost shall include all the costs related to above Scope of Work. The cost includes Design, Supply, Erection, Testing and Commissioning including Warranty, Operation & Maintenance (for a period of 5 years), goods and services including spares required if any during O&M period. The firm has to take all permits, approvals and licenses, insurance etc., provide training and such other items and services required to complete the scope of work as mentioned above.

N2

Name : Gram Panchyat Bir Tehsil Sadar Distt. Mandi, Govt. Degree Collage Arki Distt. Solan ,HP.

Order No. HIMURJA(F-7)/GCRTS Plants/2022-24-4005

Date of Order: 29 June 2022

Capacity: 27 kW

Cost : 0.13 Cr.

Regd.

HIMURJA
(H.P Govt Energy Development Agency)
Block 8-A SDA Complex Kasumpti Shimla-171009

No: HIMURJA (F-7) / GCRTS Plant / 2022-24- 4005 dated 29 June, 2022

To M/s Hydel Consultants Pvt. Ltd.,
VPO & Tehsil Shahpur,
Distt. Kangra, HP-176206.

Subject: Supply, Installation and Commissioning of Grid Connected Rooftop Solar Power Plants of 27 kW aggregate capacity at different buildings in H.P.

Reference: Tender Document No. HIMURJA (F-7) / GCRTS Plant / 2022-24 opened on dated 25.03.2022.

Sir,
With reference to above, you are hereby requested to execute the work of Supply, Installation and Commissioning of Grid Connected Rooftop Solar Power Plants of 27 kW aggregate capacity at different buildings in H.P. conforming to latest MNRE/ BIS specifications on lowest accepted rates. The other terms and conditions of the contract shall be as under:-

S.No	Description	Quantity kW	Rate per kW	Amount
1	FOR cost of Grid Connected Rooftop Solar Power Plants of 3 kW capacity at Gram Panchayat Bir, Tehsil Sadar, Distt. Mandi, H.P. for design, manufacturing, shop testing, inspection, Installation, commissioning & handing over to the HIMURJA complete in all respects as per clause No. -1 of G.C.C. and as defined in scope of technical specifications of Tender document including warranty period of five years after successful commissioning.	3	50,000.00	1,50,000.00

2	FOR cost of Grid Connected Rooftop Solar Power Plants of 24 kW capacity at Govt. Degree College Arki, Distt. Solan, HP for design, manufacturing, shop testing, inspection, Installation, commissioning & handing over to the HIMURJA complete in all respects as per clause No. -1 of G.C.C. and as defined in scope of technical specifications of Tender document including warranty period of five years after successful commissioning.	24	45,000.00	10,80,000.00
Total				12,30,000.00

(Rupees Twelve Lacs, Thirty Thousand only)

Terms and Conditions

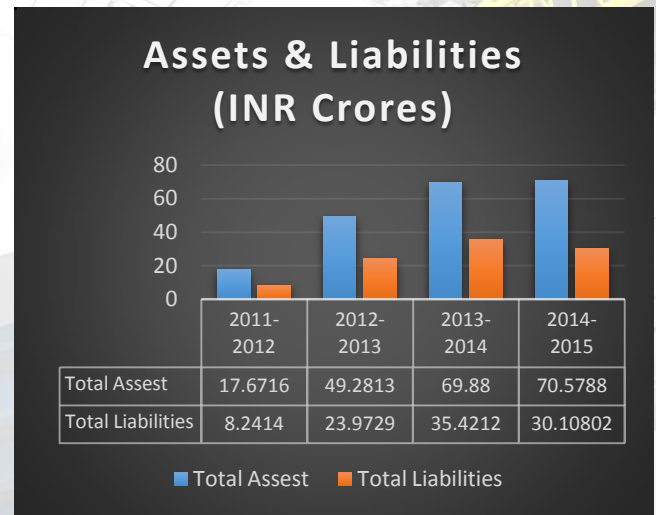
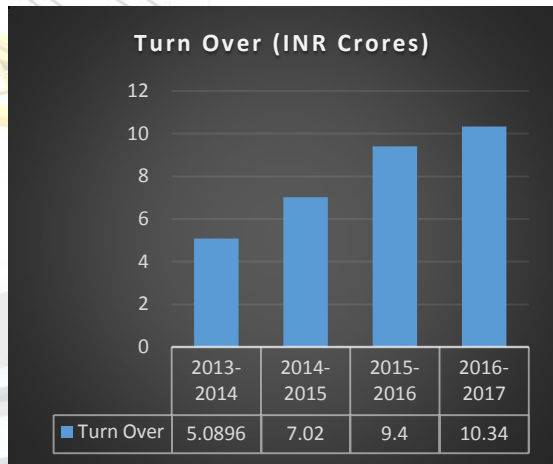
SCOPE OF WORK

- The firm shall be obliged to complete the Work as per the articulated detailed Scope of work under Clause No. 1 of tender document and in accordance with the package of Grid Connected Rooftop Solar PV project defined above.
- PROJECT COST**
 - The Project cost shall include all the costs related to above Scope of Work. The cost includes Design, Supply, Erection, Testing and Commissioning including Warranty, Operation & Maintenance (for a period of 5 years), goods and services including spares required if any during O&M period. The firm has to take all permits, approvals and licenses, insurance etc., provide training and such other items and services required to complete the scope of work as mentioned above.
 - The Project cost will remain firm and fixed and shall be binding on the firm till completion of work for payment of CFA amount irrespective of his actual cost of execution of the project. No escalation will be granted on any reason whatsoever. The firm shall not be entitled to claim any additional charges, even though it may be necessary to extend the completion period for any reasons whatsoever.
 - The Project cost will be inclusive of all duties, taxes and transit insurance etc. The cost will be complete in all respect and no price variation /adjustment shall be payable by

FINANCIAL STATUS

HCPL has robust track record of evolution since its establishment. During last three years the company has done three fold growth in respect of turnover. In current financial year company will be able to achieve its goal of touching 10 crore turnover.

Company was able to achieve its growth by manifold development in HPCL assets. In last three year company has increased its assets by four times.



BANKERS



EQUIPMENT DETAILS

At Hydel construction we have inventory of wide variety of equipment and machinery available. Brief details of some of majorequipment's and machinery available with us is as follows:

Construction Equipment

S. No.	T&P Name	Number	Make	Make Year
1.	Excavator	2	Tata Hitachi	2012
2.	Backhoe Loader	2	JCB 3DX, 3D	2012, 2010
3.	Air Compressor	6	Atlas Copco XA 146	2013
4.	Tractor driven Air Compressor	2	Ashok Leyland	2010
5.	Boomer	1	Atlas Copco	2015
6.	Tipper	7	Tata	2009, 2010, 2012, 2014
7.	Concrete Mixture	6	Universal	2012
8.	Tractor	3	New Holland, Farm Trac	2010, 2011
9.	Lighting Tower	1	Atlas Copco	2013
10.	Diesel Generator	6	Ashok Leyland, Kirloskar, Lal King	2012, 2013
11.	Vehicle	3	Bolero, Camper, Pick up	2012, 2014
12.	Dewatering pump	5	KSB, Kirloskar, Usha	2012, 2014
13.	Jack hammer	16	Atlas Copco	2012, 2014
14.	Leg Pusher	5	Atlas Copco	2013, 2014
15.	Ventilation fan	2	Crompton Greaves	2013
16.	Welding Rectifier	8	Sony Super,	2013, 2014, 2015, 2016

S. No.	T&P Name	Number	Make	Make Year
17.	Winch machine	2	Locally Fabricated with Usha Martin rope	2013
18.	Pipe Rolling Machine	1	Kirloskar	2013
19.	Pipe Cutter	5	Bosch	2014, 2015
20.	Water Tank	2	Locally fabricated	2013
21.	Shuttering Plates	10 Tonne	Locally fabricated	2013
22.	Scaffolding	9 Tonne	Locally fabricated	2014
23.	Concrete Vibrator	5	Marshal, Greeves	2014, 2015

 Survey Equipment

S. No.	Equipment Name	Number	Company Name	Make Year
1.	Topcon GPT 7501	1	Topcon	2013
2.	Topcon Govin	1	Topcon	2005
3.	DGPS	1	South	2016
4.	Total Station	2	Topcon, South	2011, 2016
5.	Auto Level AL20	1	Unique Drawing & Surveying Instrument	2005
6.	Horizon HTS 550	1	Horizon	2005
7.	Auto level Jogger 24	1		2011
8.	GPS Garmin 76 CSX	1	Garmin	2009
9.	GPS Garmin	1	Garmin	2013
10.	Altometer 76	1	Oregon	2013



Hydel Consultants Pvt. Ltd
FOR PEOPLE WITH PEOPLE

Kartik Upadhyay
Managing Director
hydelconsultants2016@gmail.com
Contact No.: +91-82195-26508